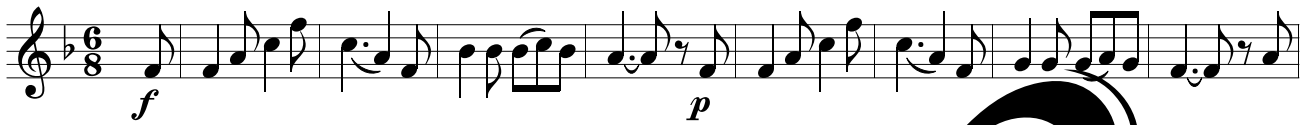


10 Frühlingslieder

arr. Josef Lang jun.

01. Komm, lieber Mai

Klarinette
in B



02. Alle Vöglein sind schon da



03. Ein Vogel wollte Hochzeit machen



04. Kukuk, rufts aus dem Wald



05. Der Mai, der Mai, der lustige Mai



10 Frühlingslieder

arr. Josef Lang jun.

01. Komm, lieber Mai

Klavier

f *p*

The musical score for 'Komm, lieber Mai' is written for piano. It features a treble and bass clef with a key signature of two flats (B-flat and E-flat) and a 6/8 time signature. The piece begins with a forte (*f*) dynamic in the bass clef, which then transitions to a piano (*p*) dynamic. The melody is primarily in the treble clef, consisting of eighth and sixteenth notes. A large, stylized watermark 'MUSIK' is overlaid diagonally across the score.

This block shows the continuation of the musical score for 'Komm, lieber Mai'. It maintains the same key signature and time signature. The dynamics remain consistent with the previous section. The watermark 'MUSIK' continues to be visible across the page.

02. Alle Vögel sind schon da

mf

The musical score for 'Alle Vögel sind schon da' is written for piano. It features a treble and bass clef with a key signature of two flats and a 4/4 time signature. The piece begins with a mezzo-forte (*mf*) dynamic. The melody is primarily in the treble clef, consisting of quarter and eighth notes. A large, stylized watermark 'MUSIK' is overlaid diagonally across the score.

p *mf*

This block shows the continuation of the musical score for 'Alle Vögel sind schon da'. The dynamics shift from mezzo-forte (*mf*) to piano (*p*) and then back to mezzo-forte (*mf*). The watermark 'MUSIK' continues to be visible across the page.