

Sechs Trauerchoräle

1. Horn in F

1. Abschied

von Sepp Graber

Two staves of musical notation in F major, common time. The first staff begins with a piano (*p*) dynamic marking. The music consists of quarter and eighth notes.

2. Choral aus "General Audienz"

bearb. Sepp Graber

Three staves of musical notation in F major, 3/4 time. The first staff begins with a piano (*p*) dynamic marking. The music consists of quarter and eighth notes.

Ewige Ruhe

von Sepp Graber

Two staves of musical notation in F major, common time. The first staff begins with a piano (*p*) dynamic marking. The second staff begins with a mezzo-forte (*mf*) dynamic marking. The music consists of quarter and eighth notes.

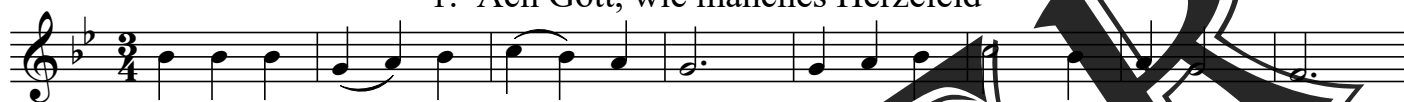
1. Horn in F

8 Bachchoräle

Joh. Sebastian Bach (1685 - 1750)

1. Ach Gott, wie manches Herzeleid

bearbeitet von Sepp Graber



2. Heut triumphieret Gottes Sohn

