

Drei Volksmelodien von:

Friedrich SILCHER (1789-1860)

Die Lorelei Wie lieblich schallt

Am Brunnen vor dem Tore

für

BLASORCHESTER

SCORE

zusammengestellt und bearbeitet von:

F.B.WEGMANN

Die Lorelei *Wie lieblich schallt* *Am Brunnen vor dem Tore*

Andante Die Lorelei

Flöte 1-2 *f* *mf*

Ob. *f* *mf*

Bsn. *f* *mf*

B.Cl.1-2 *f* *mf*

BassCl *f* *mf*

A.Sax 1-2 (in Es) *f* *mf*

T.Sax. in b *f* *mf*

B.Sx. *f* *mf*

Trp. 1-2 (Cornet) *f* *mf*

F.Hrn *f* *mf*

Trb. 1-2 *f* *mf*

Bar. C (Euphonium) *f* *mf*

Tuba 1-2 *f* *mf*

Snare *f* *mf*

Cymb. *f* *mf*

BassDrum *f* *mf*

Lyra *f* *mf*

17

MUSICAL SCORE FOR **MUSEER**

Flöte 1-2 *mf*

Ob. *mf*

Bsn. *f*

B.Cl.1-2 *mf*

BassCl *f*

A.Sax 1-2 (in Es) *f*

T.Sax. in b *f*

B.Sx. *f*

Trp. 1-2 (Cornet) *mf*

F.Hrn *f*

Trb. 1-2 *f*

Bar. C (Euphonium) *f*

Tuba 1-2 *f*

Snare *f* *mf*

Cymb. *f* *mf*

BassDrum *f* *mf*

Lyra *mf*

The score is for a full orchestra and includes a large, stylized watermark reading "MUSEER" diagonally across the page. The music is in 4/4 time and features various dynamics such as *f* (forte) and *mf* (mezzo-forte). The score includes first and second endings for the woodwinds and strings.

22

Moderato

The image shows a page of a musical score for orchestra and strings. The score is written in a key signature of two flats (B-flat and E-flat) and a common time signature (C). The tempo is marked 'Moderato'. The score includes parts for Flöte 1-2, Ob., Bsn., B.Cl.1-2, BassCl, A.Sax 1-2 (in Es), T.Sax. in b, B.Sx., Trp. 1-2 (Cornet), F.Hrn, Trb. 1-2, Bar. C (Euphonium), Tuba 1-2, Snare, Cymb., BassDrum, and Lyra. The dynamics range from *mf* (mezzo-forte) to *f* (forte). A large, stylized watermark reading 'MUSIK' is overlaid diagonally across the center of the page.

Drei Volksmelodien von: **Friedrich SILCHER (1789-1860)** Trompete 1 in b (Cornet)

Die Lorelei *Wie lieblich schallt* *Am Brunnen vor dem Tore*

zusammengestellt und bearbeitet von:

F.B.WEGMANN

Andante Die Lorelei

6 *f* *mf*

11 *f* *mp* *f*

17 *mf* 1. 2.

22 Moderato *mf* *f*

28 *Wie lieblich schallt*

32 *mp* *f*

36 *mp*

40 Moderato *f*

43 *Am Brunnen vor dem Tore* *f* 3

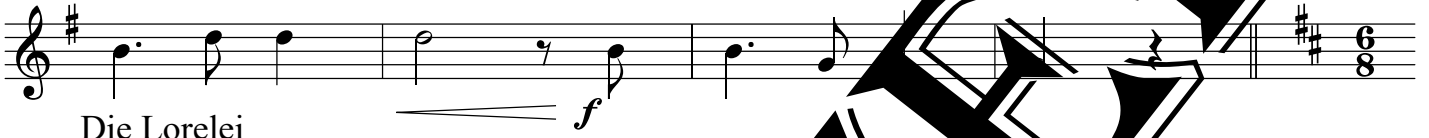
48



53



59



Die Lorelei

63

Andante



68



MUSIK